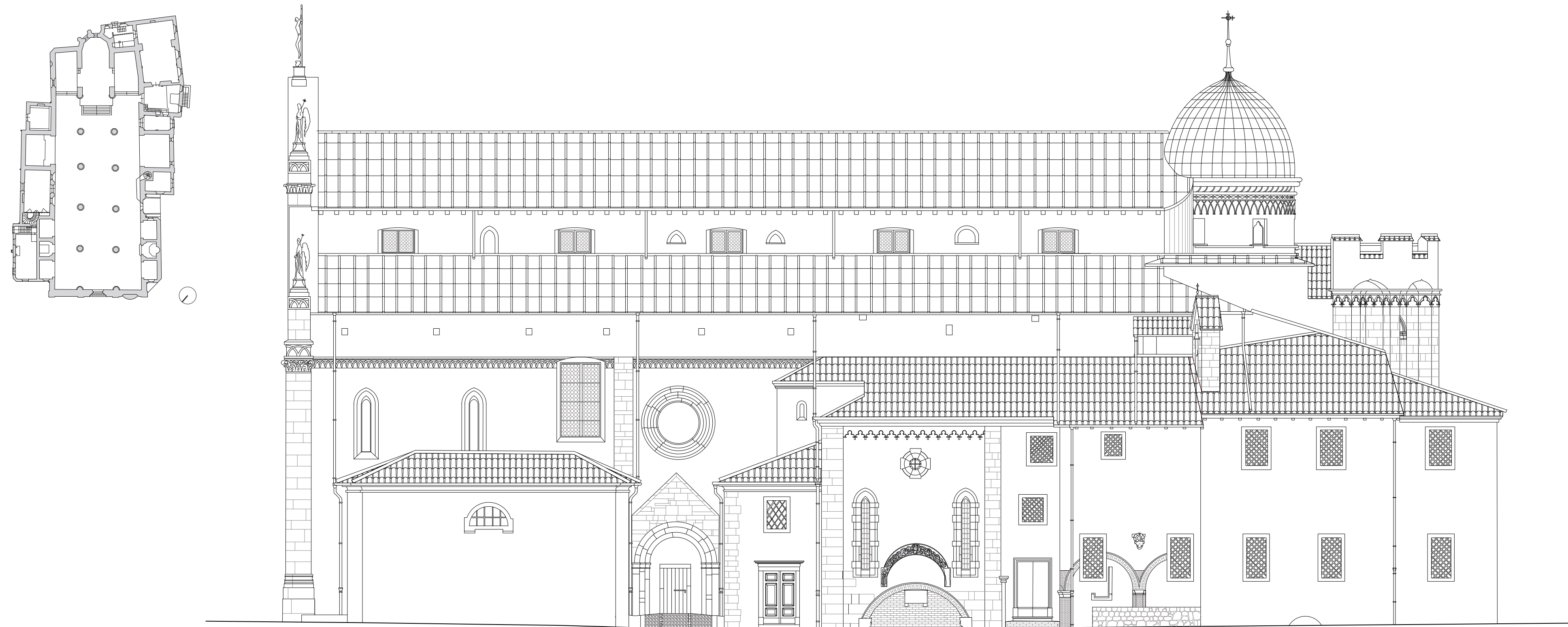
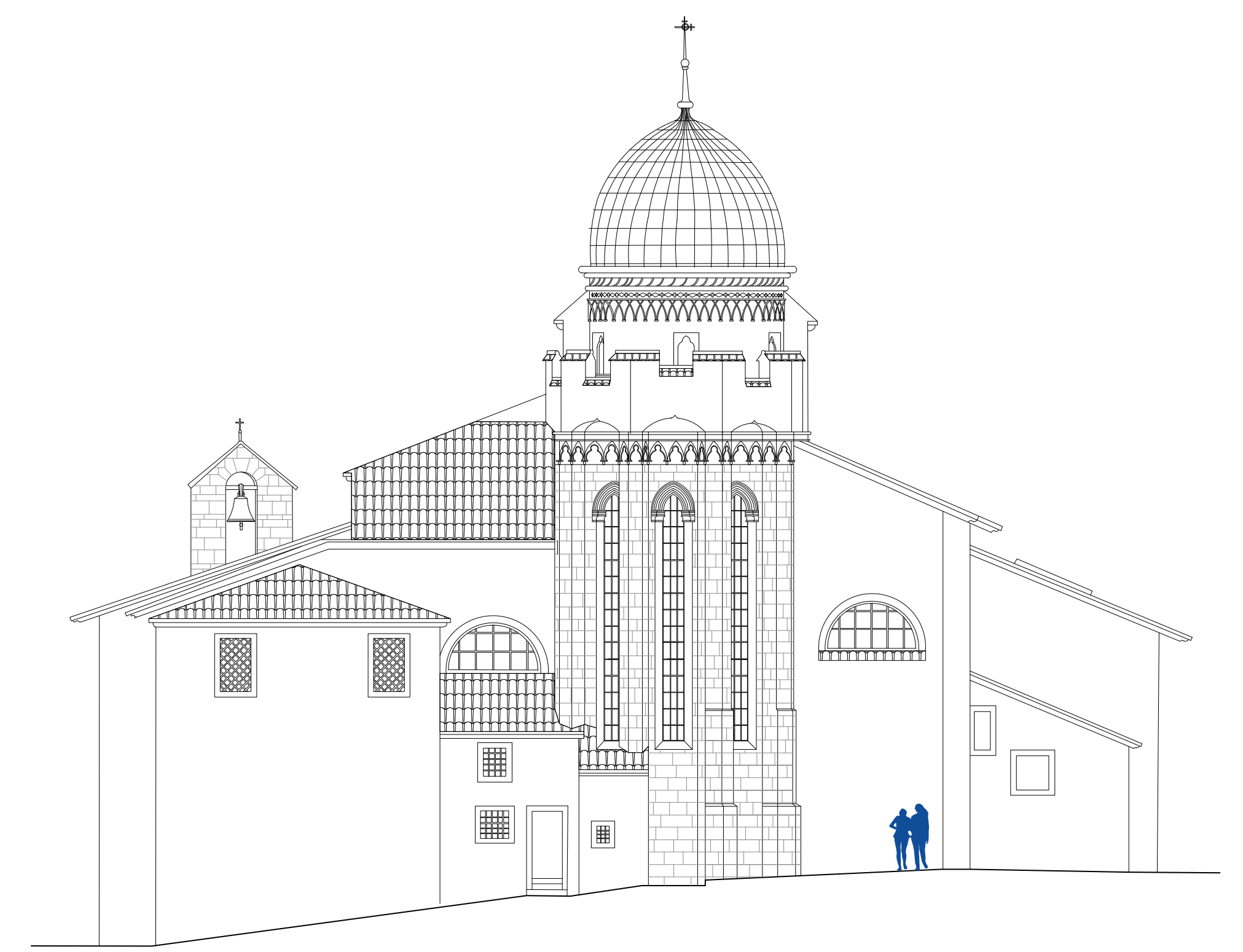


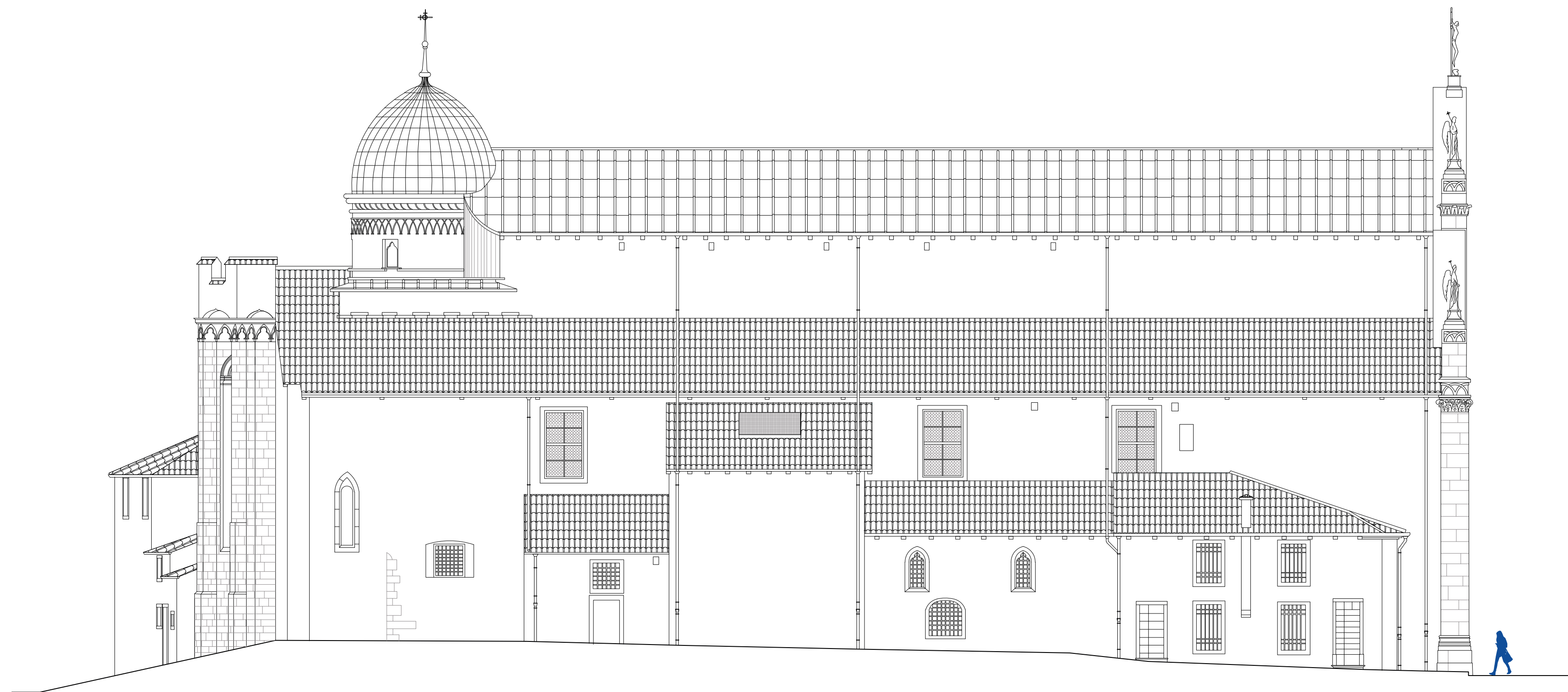
Prospetto Est - Navata Destra



Prospetto Sud - Facciata Absidale



Prospetto Ovest - Navata Sinistra



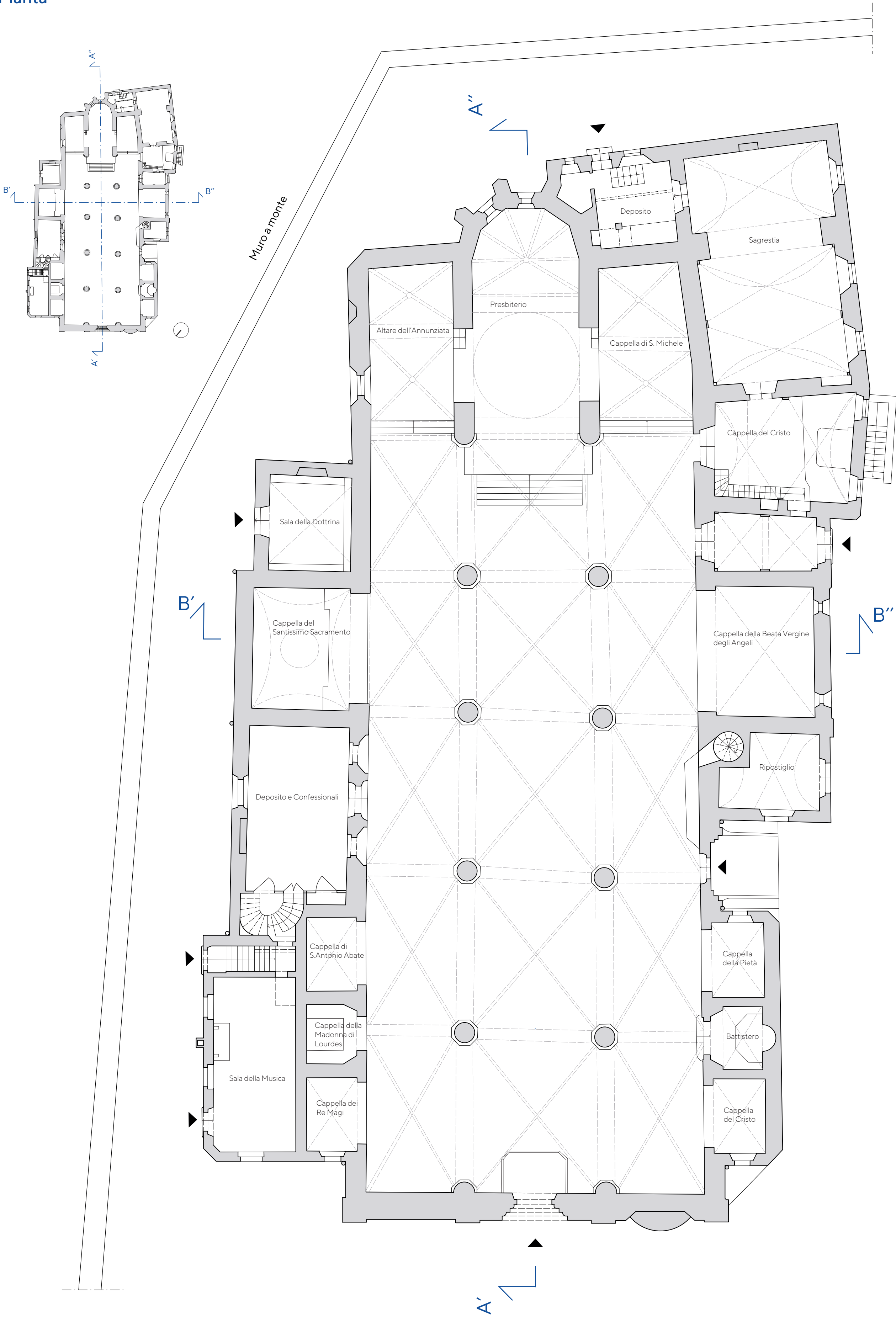
Prospetto Nord - Facciata principale



0 1 2 3 4 5m

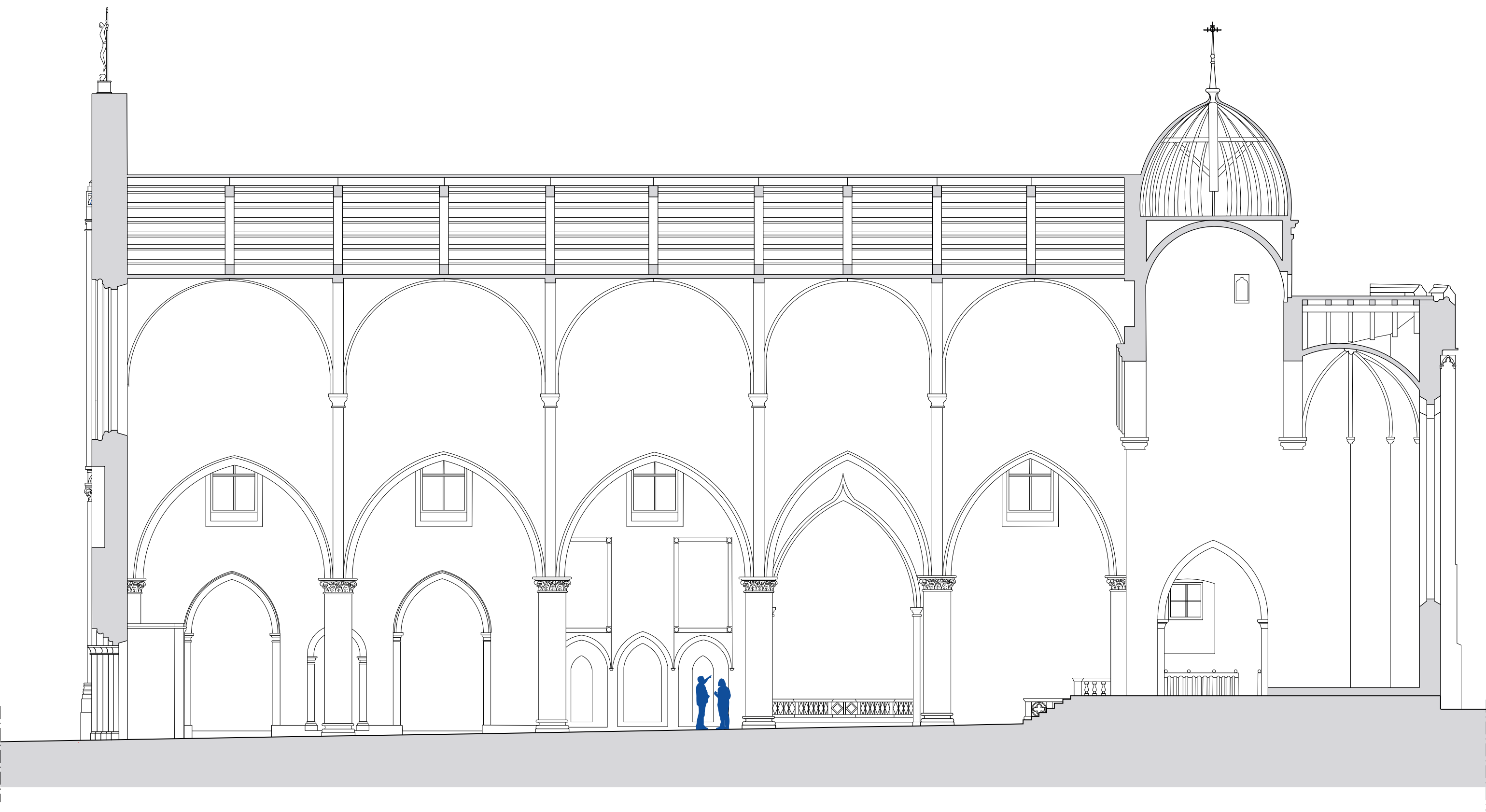
RILIEVO STORICO, R. Elia (Luglio 1952)

Pianta

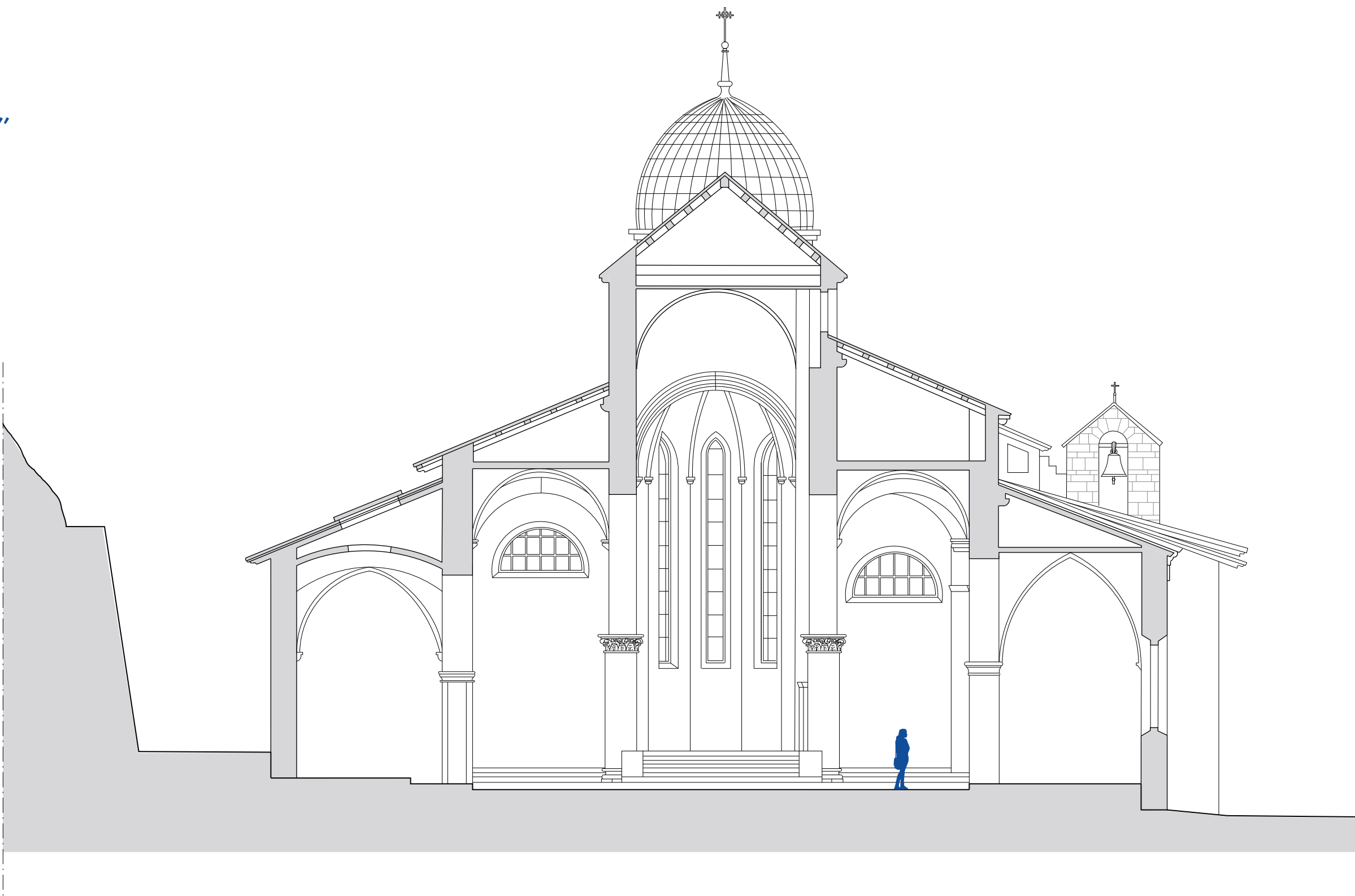


Fonte: R. Elia, *Rilievo storico*, Archivio Parrocchiale, 1952
Riproduzione grafica del rilievo originale mantenendo inalterate in congruenze grafiche e costruttive

Sezione A'-A''



Sezione B'-B''



0 1 2 3 4 5m

